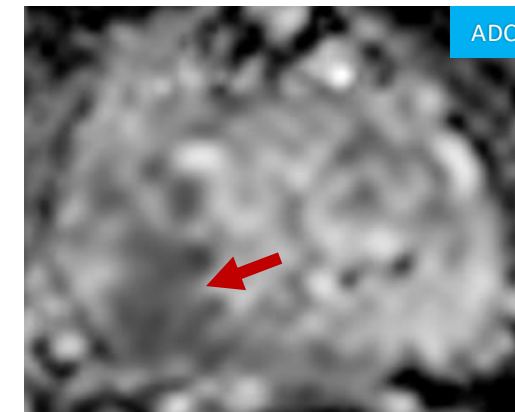
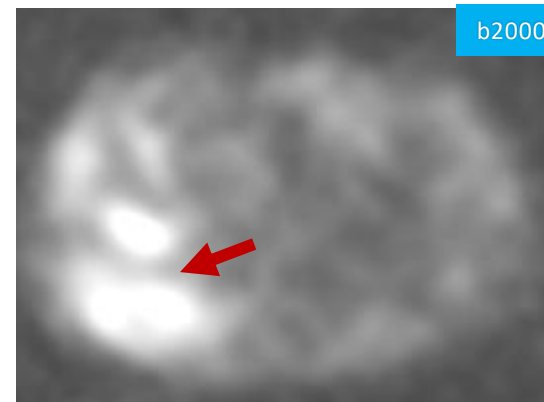
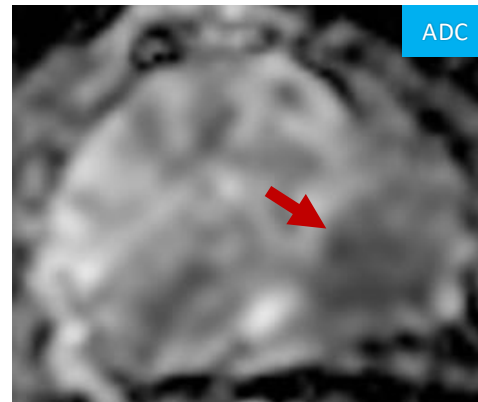
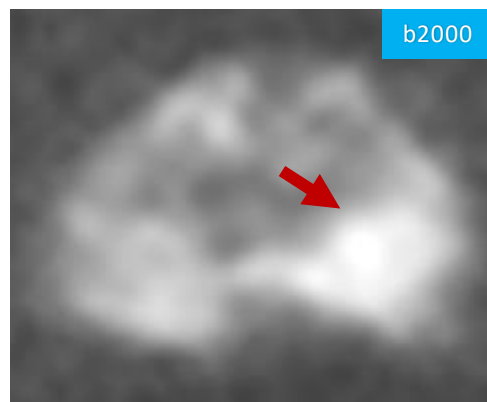


Prostate Case 1 Answer



PROSTATE VOLUME: 28.3 ml PSAD: 0.32 ng/ml/cm³

INDEX LESION:

T2W: 19 mm low signal left PZ posterolaterally at apex.

DWI: Associated restricted diffusion

LESION TWO: 16 mm low signal right PZ posteriorly, mid gland. Associated restricted diffusion.

OTHER FINDINGS: Multiloculated cystic lesion left scrotum, likely a complex epididymal cyst or a loculated hydrocele. Small hydrocele right testis.

IMPRESSION: Bilateral PZ tumours, T2 N0 (degree of capsular contact predicts increased risk of microscopic T3a disease, difficult to assess due to blurring). PIRADS: 5 LIKERT: 5